



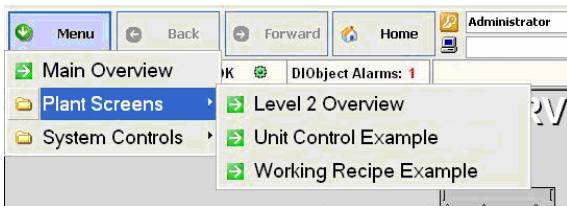
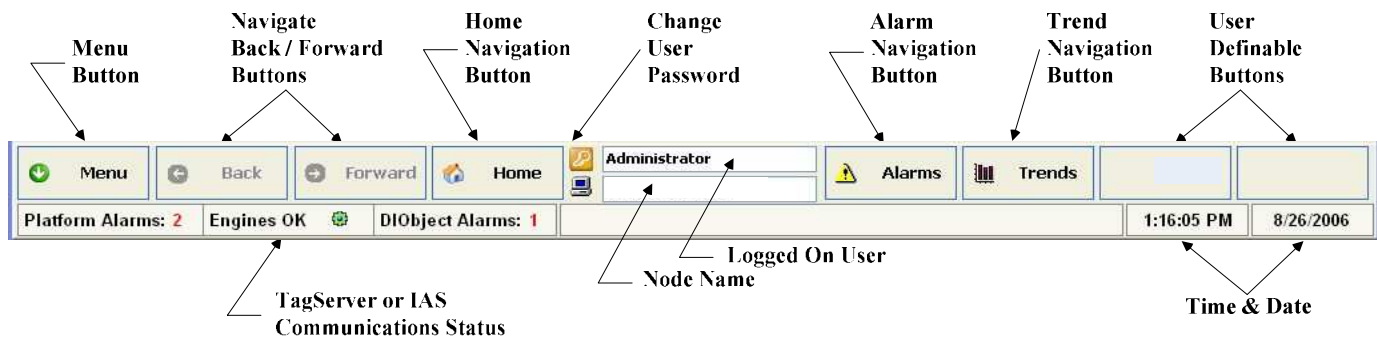
# Wonderware InTouch<sup>®</sup> Client Tools

The Wonderware InTouch Client Tools from Progressive Software Solutions, Inc. (PS<sup>2</sup>) are a suite of ActiveX controls that provide advanced security, screen navigation and enhanced database connectivity tools for

- Feature Bar - Advanced Security & Navigation
- PS2 Combo Box
- PS2 Text Box
- PS2 Data Grid - Advanced Database Viewer
- PS2 List Box

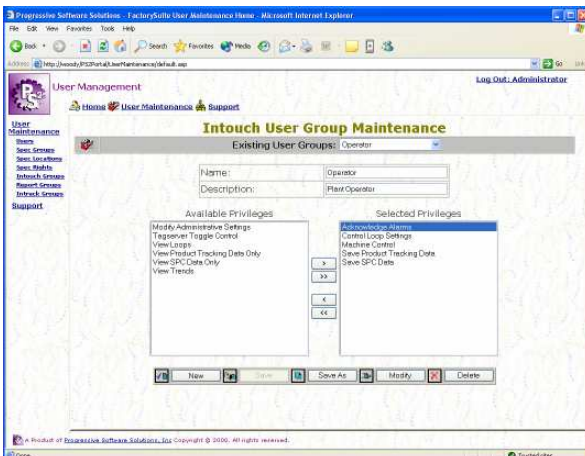
## Feature Bar—Advanced Security & Navigation

The Feature Bar ActiveX control provides “Windows-like” screen navigation and privilege-based security for InTouch<sup>®</sup> applications.



### Cascading Menus

- Dynamic cascading menus.
- Navigation History (backwards & forwards).
- User-defined “Home” screen
- 2 User-defined buttons (Launch other applications, etc.)
- Configurable “tool tips” are shown if user hovers over button.
- Configurable appearance, including screen location, fonts, button images, & colors.



### Portal-based Configuration

Feature Bar security module combines InTouch security with privilege-based security configured in SQL Server<sup>®</sup>

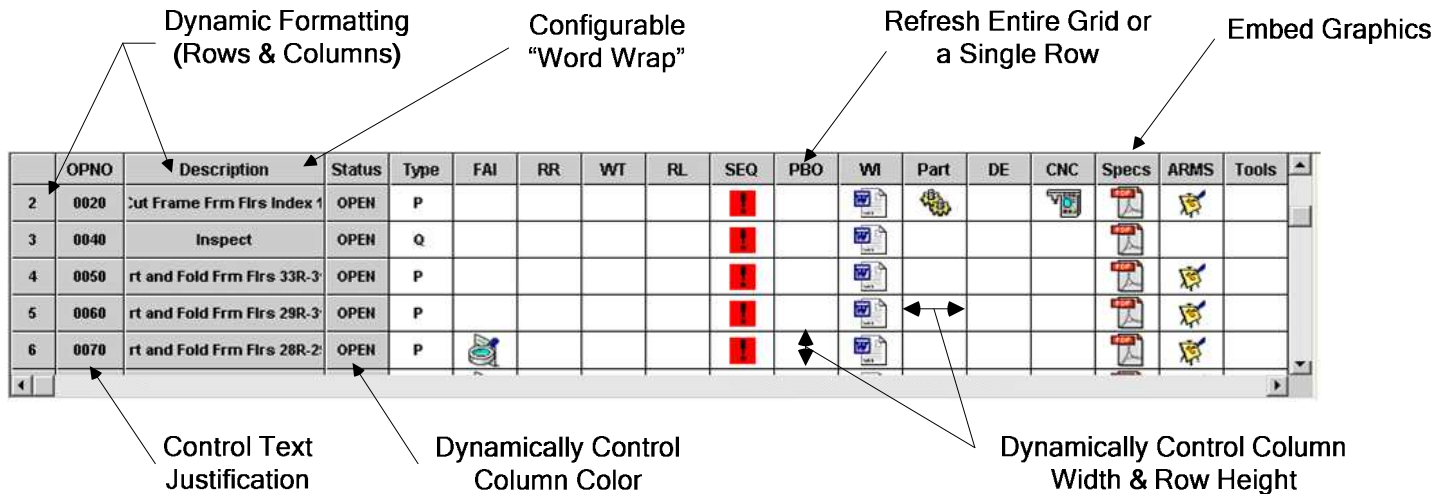
- User-definable Security Groups, Privileges & Users.
- Privileges control screen navigation, object visibility and object operation.
- Includes 6 pre-configured privileges, including Alarm Acknowledgement, Machine Control, Control Loop, Administrative, Maintenance, and Engineering Settings.
- Once installed, routine changes, such as adding users, screens, etc. do not require an InTouch development license.
- Continuous connection to database not required. Client caches security and navigation locally to permit continued operation should database connection be lost.

**Other Tools**

## PS<sup>2</sup> Data Grid—Advanced Database Viewer

The Data Grid ActiveX control provides InTouch with enhanced data viewing capabilities for data from Microsoft SQL Server or other ODBC-compliant databases. The PS<sup>2</sup> Data Grid is dynamically formatted, with its size, appearance, and operation all configurable within the InTouch runtime environment.

- Insert graphics into columns
- Resize row or columns
- “Word Wrap” capable cells
- Control number of rows and columns returned
- Text alignment within cells (Left, Center or Right)
- Clear the Grid of data, colors, or graphics
- Control number of rows showing
- Refresh entire Grid or a single row.
- Set column color



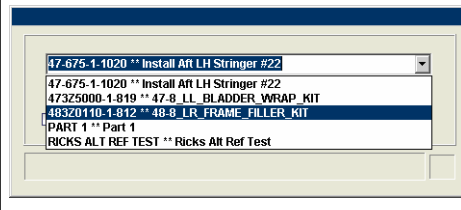
Foreground and background color, font type and size, and database connectivity are all configured as part of application development, The PS<sup>2</sup> Data Grid provides configurable actions via InTouch scripting in response to users selecting data by row, column, or cell.

### Other Database Controls

#### PS<sup>2</sup> Combo Box

Display, entry, and selection of data via text box & pull-down list.

Scriptable item selection actions.



#### PS<sup>2</sup> Text Box

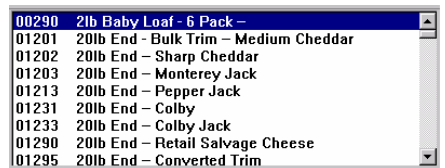
Permits display or entry of text-based data into a database, bypassing 131 character limitation of InTouch.

The PS2 Text Box permits the entry of text-based data into a database without the 131 character limitation associated with InTouch Message Tags

#### PS<sup>2</sup> List Box

Display and select one or more items from returned list of data.

Scriptable item selection actions.



#### Includes:

Feature Bar ActiveX  
SQL Server Tables  
PS2 FactorySuite Portal.

#### Version Requirements:

InTouch: Version 7.1 or newer  
SQL Server: Version 7.0 or newer  
OS: Win 2K or newer

For more information contact:

**Progressive Software Solutions, Inc.**

PO Box 3205 • Albany, Oregon 97321

Phone: (541) 924-1741 • FAX: (541) 924-1821

Web: [www.ps2inc.com](http://www.ps2inc.com)

Supports operation in either traditional InTouch ‘thick client’ or Terminal Services (thin client) applications.